



- when it has to be right



Calgary Office  
 #2, 21 Highfield Circle SE  
 Calgary, AB T2G 5N6  
 (403)252-0070

Edmonton Office  
 16304 111 Avenue  
 Edmonton, AB T5M 4G3  
 (780) 486-2111

Vancouver Office  
 #10, 3671 Viking Way  
 Richmond, BC V6V 2J5  
 (604)214-9453

**Spatial Technologies Technical Support: 1(855)414-9453**

## Building a Third-party Code List in Infinity to use in Leica systems:

Often, it is necessary to import a code list from a **third party/external system** into Leica Infinity. The following will outline steps in doing so:

1. The pre-requisite is to ensure the **third-party** code list is in a .csv file with a description key listed as shown.

A	B	C	D	E	F	G	H
CODE	STYLE	OVERWRITE YES/NO	POINT LABEL STYLE	OVERWRITE YES/NO	FORMAT	LAYER	
46.00 SB*	_coff	Yes	_coff	Yes	Stop Bar \$1	V-ROAD-MIRK	
47.00 SHA*	_coff	Yes	_coff	Yes	SH Asph	V-ROAD-SHLD	
48.00 SHG*	_coff	Yes	_coff	Yes	SH Grav	V-ROAD-SHLD	
49.00 SWA*	_coff	Yes	_coff	Yes	SW Asph	V-ROAD-WALK-ASPH	
50.00 SWB*	_coff	Yes	_coff	Yes	SW Brick	V-ROAD-WALK-BRK	
51.00 SWC*	_coff	Yes	_coff	Yes	SW Conc	V-ROAD-WALK-CONC	
52.00 SWDR*	_coff	Yes	_coff	Yes	SW Drop	V-ROAD-WALK-CONC	
53.00 SWG*	_coff	Yes	_coff	Yes	SW Grv	V-ROAD-WALK-GRAV	
54.00 SWR*	_coff	Yes	_coff	Yes	SW Ramp	V-ROAD-WALK-CONC	
55.00 XW*	_coff	Yes	_coff	Yes	Cross Walk \$1	V-ROAD-MIRK	
<b>56.00 02 - Topography</b>							
57.00 BB*	_coff	Yes	_coff	Yes	Toe of Bank	V-TOPO-EMBK-BOTS	
58.00 BRCK	_coff	Yes	_coff	Yes	Bedrock	V-TOPO	
59.00 BRX*	_coff	Yes	_coff	Yes	Breakline	V-TOPO	
60.00 CRK*	_coff	Yes	_coff	Yes	Creek CL	V-TOPO	
61.00 OV	_coff	Yes	_coff	Yes	Overhang	V-TOPO	
62.00 PD*	_coff	Yes	_coff	Yes	Point	V-TOPO	
63.00 RC*	_coff	Yes	_coff	Yes	Road Cut	V-TOPO	
64.00 RCK	_coff	Yes	_coff	Yes	Rock	V-TOPO	
65.00 RI*	_coff	Yes	_coff	Yes	River	V-TOPO	
66.00 SE	[+] Plus 1.8	Yes	Elev 1.8mm	Yes	Spot Elev	V-TOPO	
67.00 TB*	_coff	Yes	_coff	Yes	Top of Bank	V-TOPO-EMBK-TOPS	
<b>68.00 03 - Sanitary Sewer</b>							
69.00 CMH	Combined Manhole	Yes	_coff	Yes	CMH	V-COMB-STRC	
70.00 SCD	Sanitary Cleanout Small	Yes	_coff	Yes	S Cleanout	V-SSWR-STRC	
71.00 SCOL	Sanitary Cleanout Large	Yes	_coff	Yes	S Cleanout LA	V-SSWR-STRC	
72.00 SCP	Sanitary Cap	Yes	_coff	Yes	S Cap	V-SSWR-STRC	

2. The most important aspect is to make sure you can isolate the *code* and *description* columns. It is recommended that Microsoft excel is used for this process for simplicity sake.

3. Add in additional columns of: *Point ID, Northing, Easting, Height*.

Note: Ensure point ID is unique, however Northing/Easting and Height can be identical

Save the CSV file.

A	B	C	D	E	F
Point ID	North	East	Height	Code	Descp
1	1000	500	100	ANT	Antenna Base
2	1000	500	100	ASP	Asphalt
3	1000	500	100	BEN*	Bench
4	1000	500	100	BG*	Building Line
5	1000	500	100	BGP	Building Post
6	1000	500	100	BR*	Bridge
7	1000	500	100	BUS*	Bus Shelter
8	1000	500	100	CC*	Concrete
9	1000	500	100	DIR	Direction shot 1\$ 2\$
10	1000	500	100	FD*	Field Edge
11	1000	500	100	FP	Flag
12	1000	500	100	MB	Building Post
13	1000	500	100	PG*	Playground Edge
14	1000	500	100	PO	Post
15	1000	500	100	RFL*	Roofline
16	1000	500	100	RL*	Rail
17	1000	500	100	RRB*	CL Ballast
18	1000	500	100	RRS	RRS
19	1000	500	100	SI	Sign
20	1000	500	100	SIC*	Sign Corner
21	1000	500	100	SZ*	Stairs
22	1000	500	100	ZZ	ZZ \$1 \$2 \$3 \$4

4. Open up a new Project in Infinity with default settings.



Calgary Office  
 #2, 21 Highfield Circle SE  
 Calgary, AB T2G 5N6  
 (403)252-0070

Edmonton Office  
 16304 111 Avenue  
 Edmonton, AB T5M 4G3  
 (780) 486-2111

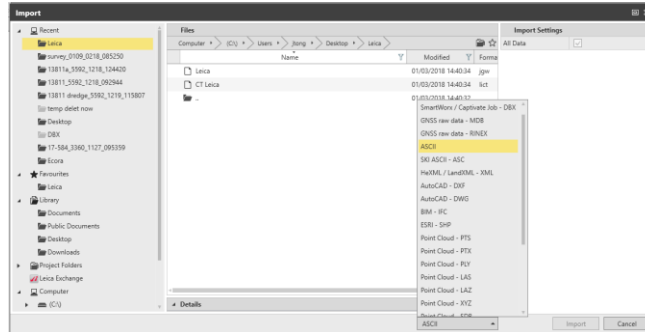


- when it has to be **right**

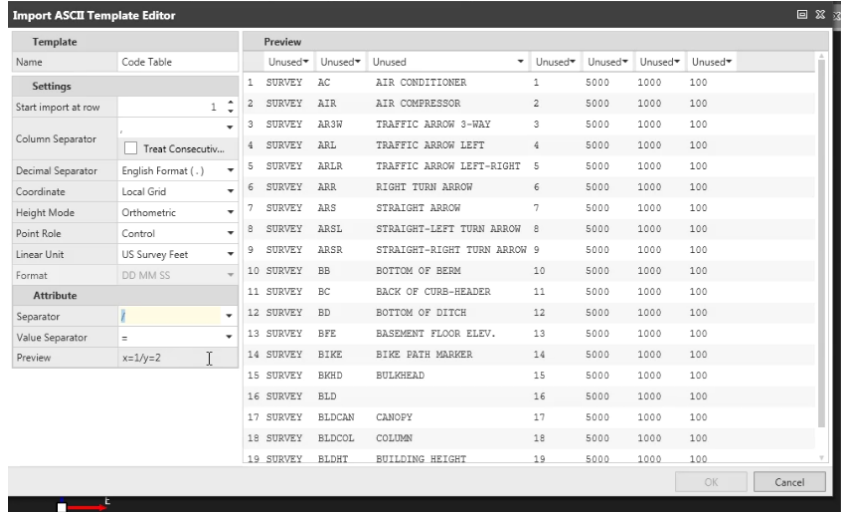
Vancouver Office  
 #10, 3671 Viking Way  
 Richmond, BC V6V 2J5  
 (604)214-9453

**Spatial Technologies Technical Support: 1(855)414-9453**

- From the <home> tab, select *Import* and make sure ASCII is selected as import file type.



- Navigated to the saved CSV that was created in step 4. A new ASCII import template is required.



- Give the template a name (e.g. Code Table), and ensure that the *Column Separator* is set to “,”
- The rest of the *Settings/Attributes* can be left alone as this is just an example to create a code table.



Calgary Office  
 #2, 21 Highfield Circle SE  
 Calgary, AB T2G 5N6  
 (403)252-0070

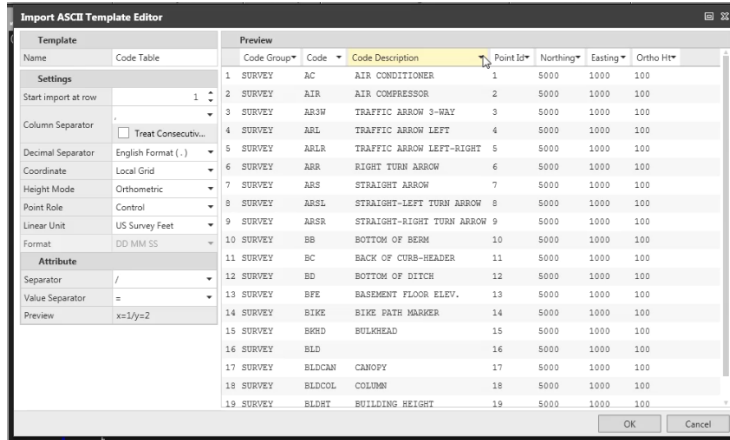
Edmonton Office  
 16304 111 Avenue  
 Edmonton, AB T5M 4G3  
 (780) 486-2111

Vancouver Office  
 #10, 3671 Viking Way  
 Richmond, BC V6V 2J5  
 (604)214-9453

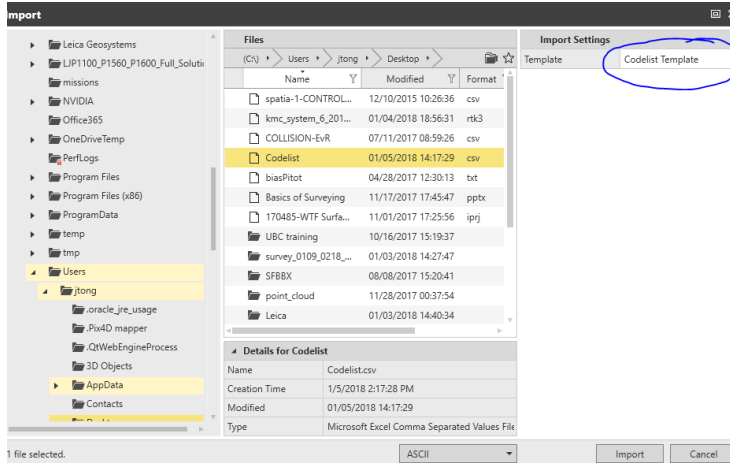
**Spatial Technologies Technical Support: 1(855)414-9453**

9. Designate each column as *Code Group*, *Code*, *Code Description*, *Northing*, *Easting*, *Ortho*, and *Point ID*.

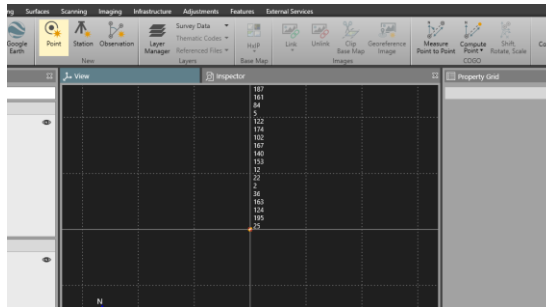
Press <OK>



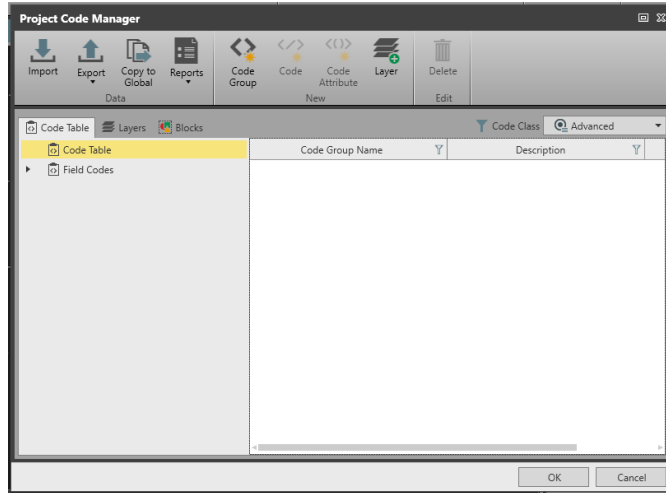
10. Select the csv file and check to see the active template is selected and press <Import>



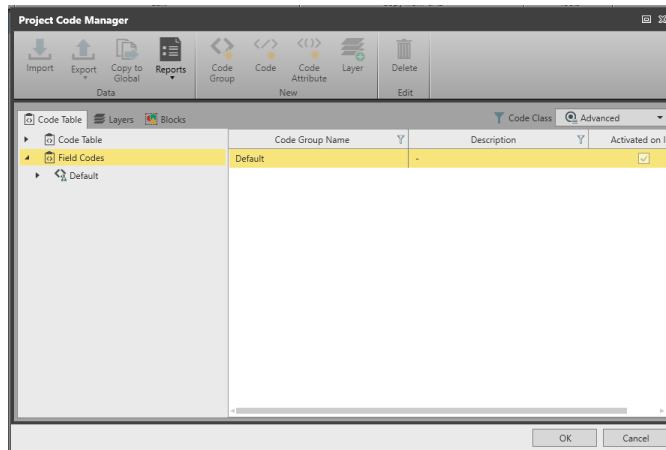
11. Once imported, because the point ID are identical it will appear as if there's a stack of points as shown



12. Navigate to *Features* tab, and click on <Code Manager> to go into *Project Code Manager*.

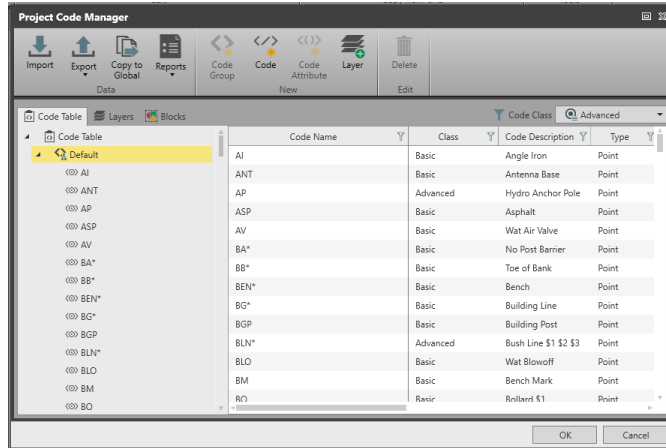


13. Under *Code Table* tab, highlight the **Field Codes**, and select the group(s) under the Code Group Name column, and press **<Ctrl>x** on your keyboard.

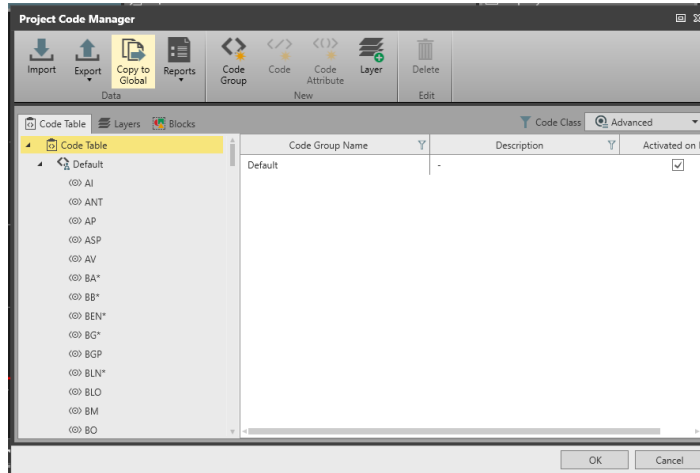


14. Highlight **Code Table**, and press **<Ctrl>v**

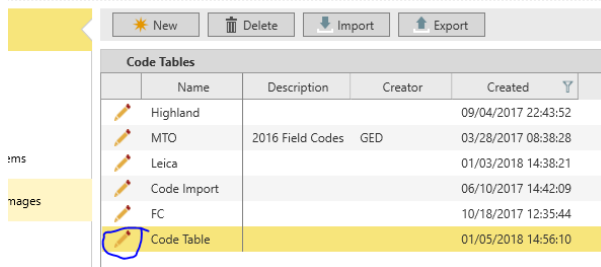
15. Verify by expanding Code Table, to ensure “Default” code group name is available. Further expanding will show all the codes.



16. Lastly, highlight **Code Table** again, and select the <Copy to Global> button.



17. Close the Project Code Manager, and navigate to <File> tab, *Tools, Code Tables* to verify that the newly created Code Table. Selecting the editing tool (pencil icon) to crosscheck all the codes that are available.



18. Using the <Export> button, the codelist now can be exported a SmartWorx/Captivate job various HeXML, Flexline job, and other Infinity jobs.