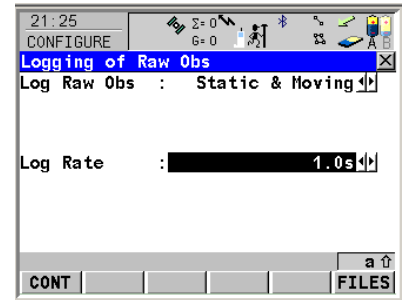


Configuring the Leica System 1200 base station to log kinematic data

SmartWorx version v8.50

This help sheet will assist with setting up the collection of kinematic data pickup in the System 1200 all on pole rover.

1. Ensure that the RX1230 has a CF card inserted into the slot beside battery terminal A. As a general rule of thumb, logging raw data at 5 second intervals over 1 hour will create around 0.3mb of Leica MDB data.
2. Start the GNSS receiver and RX controller, allow for the Bluetooth to connect, then from the main menu, select '5. Config' -> '1. Survey Settings' -> '5. Logging of Raw obs'. Set the 'Log Raw Obs' option to 'Static & moving' and the 'Log Rate' to be 1.0s. Press continue to return to the main menu.



3. Select 'Survey' to begin the survey as per usual procedure.
4. The raw data logging status can be checked by pressing the 'user' key on the keyboard, then 'F3/STAT', then '1. Survey' and then '4. Logging status'. Here you can check the number of static and kinematic observations which have been logged to the controller.
5. To finish the survey, exit back to the main menu then power down the instrument.
6. Remove the CF card and place inside a card reader or laptop CF drive. The 12-15 raw data files will appear in the DBX folder with the job name specified in the survey start screen. Select all of these files, then right click 'send to' a compressed zipped folder.
7. Right click on the created .zip file then 'send to' 'mail recipient' to automatically attach the raw data to an email.

For technical support, contact Chris Landvogt in the Vancouver office on 604 214 9453