

Calgary Office
 #2, 21 Highfield Circle SE
 Calgary, AB T2G 5N6
 (403)259-3992

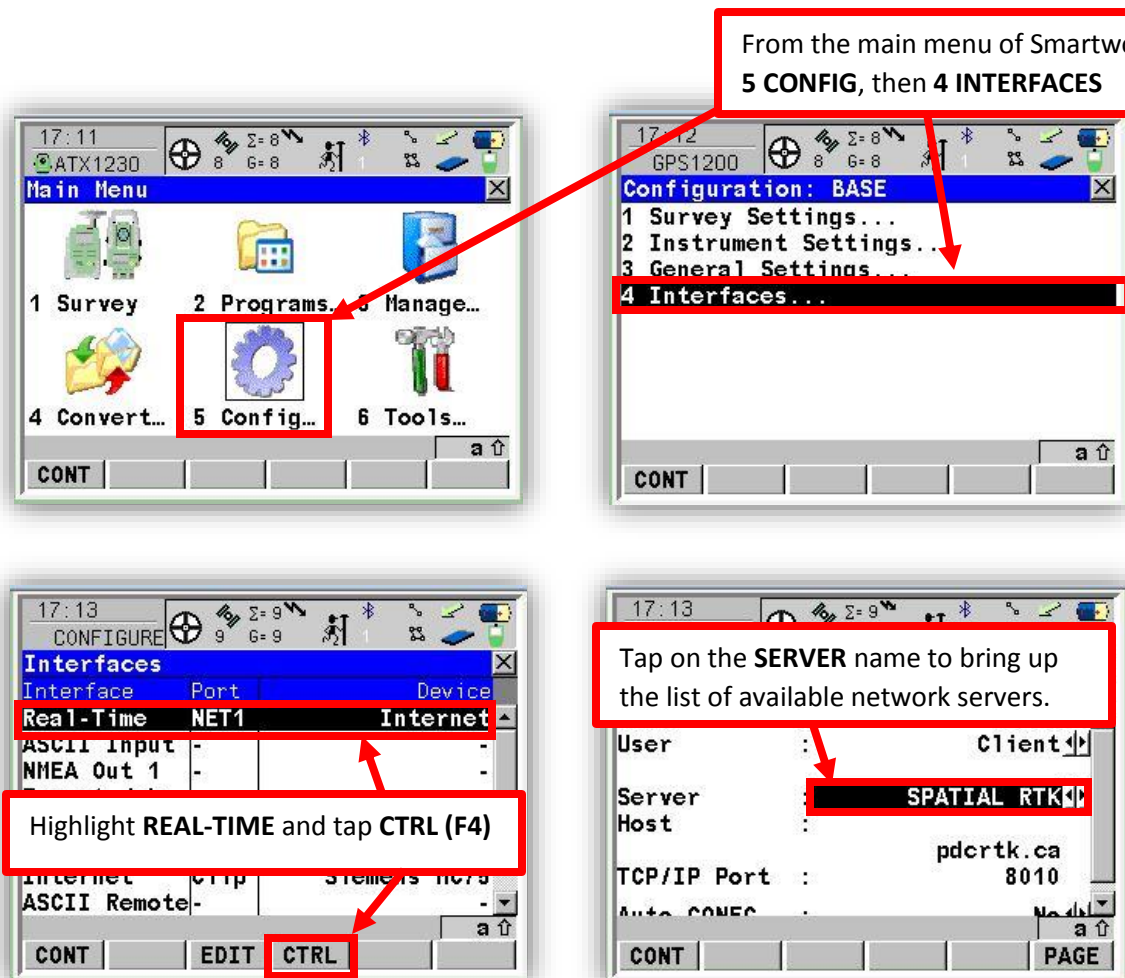
Edmonton Office
 16304 111 Avenue
 Edmonton, AB T5M 4G3
 (780)486-2155

Vancouver Office
 #10, 3671 Viking Way
 Richmond, BC V6V 2J5
 (604)214-9453

Editing Internet Port Connection Server and NTRIP information

With the change over from Pleiades Data Corporation RTK corrections services to Leica's SmartNet North America will require the user to change the assigned SERVER TO USE in the Internet Port Connections.

All support issues related to network connections, usernames and passwords, are now being handled by Leica SmartNet support. Contact: <https://support.smartnetna.com/hc/en-us/>



From the main menu of Smartwrx, tap **5 CONFIG**, then **4 INTERFACES**

Tap on the **SERVER** name to bring up the list of available network servers.

Highlight **REAL-TIME** and tap **CTRL (F4)**

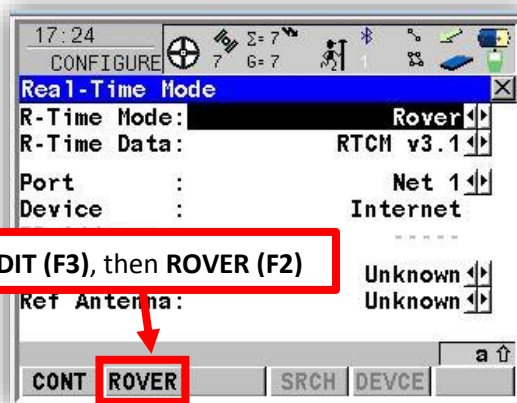
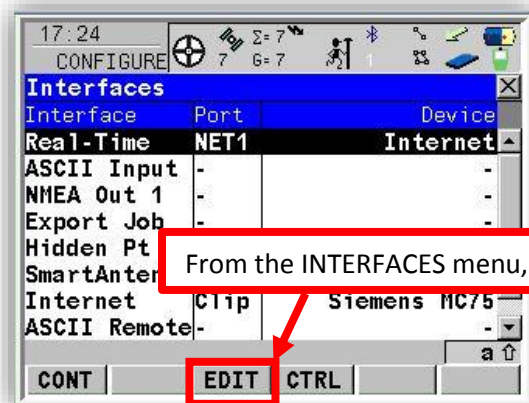
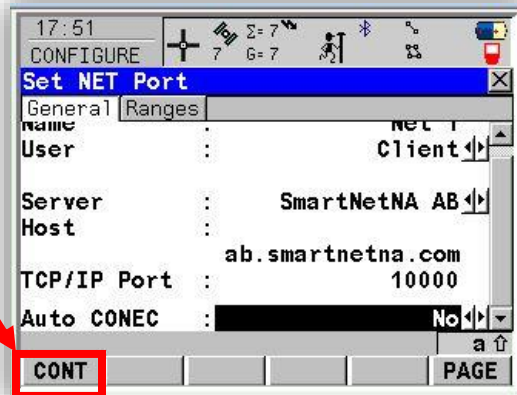
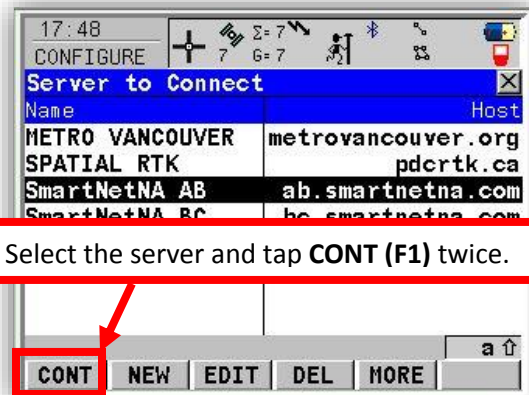
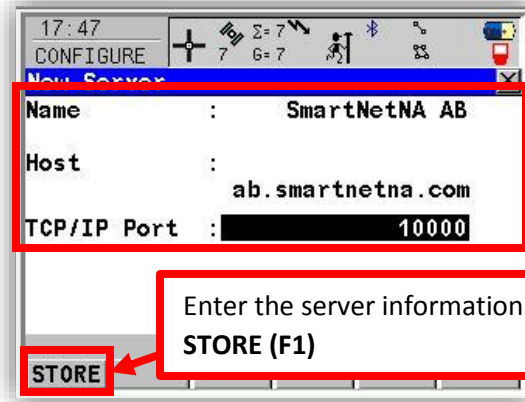
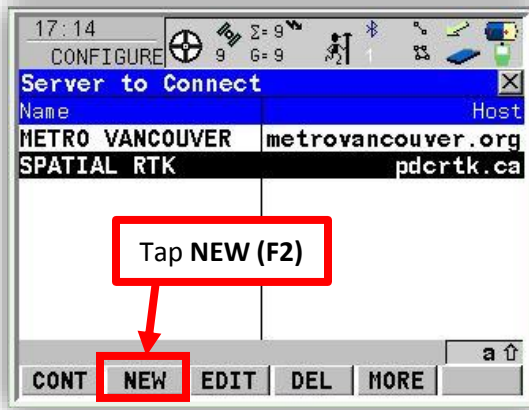
Interface	Port	Device
Real-Time	NET1	Internet
ASCII Input	-	-
NMEA Out 1	-	-

User	:	Client
Server	:	SPATIAL RTK
Host	:	pdcrtk.ca
TCP/IP Port	:	8010
Auto CONEC	:	Model

Calgary Office
 #2, 21 Highfield Circle SE
 Calgary, AB T2G 5N6
 (403)259-3992

Edmonton Office
 16304 111 Avenue
 Edmonton, AB T5M 4G3
 (780)486-2155

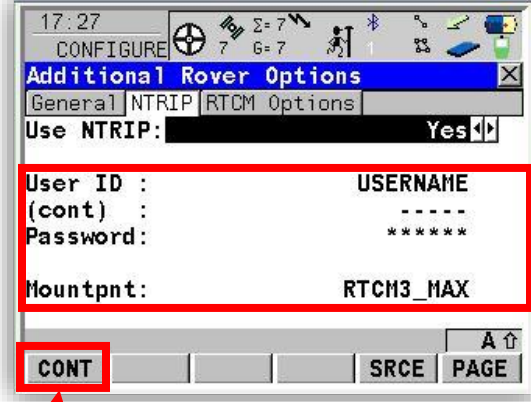
Vancouver Office
 #10, 3671 Viking Way
 Richmond, BC V6V 2J5
 (604)214-9453



Calgary Office
 #2, 21 Highfield Circle SE
 Calgary, AB T2G 5N6
 (403)259-3992

Edmonton Office
 16304 111 Avenue
 Edmonton, AB T5M 4G3
 (780)486-2155

Vancouver Office
 #10, 3671 Viking Way
 Richmond, BC V6V 2J5
 (604)214-9453



Tap PAGE (F6), and enter the Username and Password as provided by SmartNet.

The **MOUNTPOINT** will depend on the Ref NETWORK type used,

RTCM3_MAX for MAX Network

RTCM3_NEAR for Nearest Network

Tap **CONT (F1)** to save the settings.

All support issues related to network connections, usernames and passwords, are now being handled by Leica SmartNet support. Contact: <https://support.smartnetna.com/hc/en-us/>